



Imaging Services

***(1) POSITIONING SPONGES***

***(Coated & Uncoated)***

***(2) VINYL COVERED***

***(3) CLOSED CELL***

***(4) NYLON COVERED FOR MRI***

***(5) ARIFACT-FREE COATED***

**WE HAVE THEM ALL...**

**THIS CATALOG HAS THE MOST COMPREHENSIVE  
COLLECTION OF POSITIONING SPONGES AVAILABLE.  
ALL THE DIFFERENT TYPES ARE SHOWN ABOVE.**

**WE MAKE IT EASY FOR YOU TO ORDER:**

- FAX: 302.248.9310
- E-mail: [mtokash@imagingervices.net](mailto:mtokash@imagingervices.net)
- PHONE: 410.513.6840
- MAJOR CREDIT CARDS ACCEPTED
- ORDER FORM IS ON THE LAST PAGE

**\*\* YOU MUST MENTION **CODE POS3** ON  
YOUR THE ORDER SHEET TO RECEIVE  
THESE PRICES**

# IMPORTANT INFORMATION TO KNOW ABOUT POSITIONING SPONGES

**A GUIDE TO POSITIONING SPONGES**—Before you can understand and properly use positioning aids, you need to understand what the “field of view” for imaging is. Understanding the field of view is critical when using positioning aids properly.

When a technologist needs to take an image, positioning sponges are used for generally two purposes:

First is comfort and support for a patient while imaging a specific body part. Imagine if a patient was in a car accident and broke their hand. You need to take an image of the damaged hand. However, the patient’s arm is badly scrapped or cut and they are extremely sore or bleeding.

In order to position the patient properly, safely and comfortably, you may use a positioning sponge to prop up their arm.. ‘Since you are imaging only the hand, this sponge is not in the field of view. Because of this, it does not matter if this sponge is radiolucent or if it will show in an image. The sponge (if coated) is protected from the bodily fluids and can be wiped clean after use.

The other purpose is positioning of the actual body part in the image,, Let’s say you need to image the hand of the patient in the car accident. However, the hand is so badly damaged that you cannot spread the finger apart properly to get the angles needed. You may use a sponge to rest the patient’s hand on during the procedure. The angles or “steps” of a hand sponge will help spread the fingers and position them properly for the image. Since this sponge is in the field of view, it is extremely important that the sponge be radiolucent and will not show an artifact.

## ***DIFFERENT SPONGES ARE DESIGNED FOR SPECIFIC PURPOSES.***

### **ARTIFACT AND ACCEPTABLE IMAGES -**

Now that you understand when the field of view is, you need to understand an artifact. An artifact is anything that shows on an image that distorts the *image of the body part being examined*.

This is **NOT** to be confused with a sponge showing the outside of the body part.

Using the damaged hand as an example again: If the hand is shown in the image and the only part of the sponge you see is the outer border (passing through the wrist or arm), this is not an artifact. This is considered an acceptable image.

Since the sponge only shows through a part of the body NOT being examined, it is not considered an artifact, It is **ONLY** when a line or mark shows **THROUGH** the body part of extremity being imaged that it is considered an artifact.

***Artifacts are different than shadows.*** Shadows may occur with any sponge. However, a sponge will instantly show on an image if it has any sort of coating. A coated or vinyl covered sponge will show shadowing on any image. The chemical composition of coating and the thickness/material of vinyl shows during imaging. However, shadowing does not make an image unacceptable. As mentioned before, it is **ONLY** when a line or mark shows through the specific body part being examined that it is an unacceptable image.

# SECTION 1

# POSITIONING SPONGES ALL TYPES (COATED AND UNCOATED )

## COATED



Stealth-Cote: (coated open-cell polyurethane foam)

1. New Proprietary Mixed Coating, that when sprayed, creates a unique skin membrane resistant to various chemicals and bodily fluids. It adds cleanability and durability to every sponge. It is not your old synthetic rubber vinyl based coating.
  - a. Radiolucent and Artifact-free—no lines or ghosting
  - b. Meets California 2015 TB #117-2013 Standards for flammability
  - c. Increased stability
2. Anti-Microbial, which also means Antibacterial and Antifungal
3. Stain Resistant
4. Easy to clean with any medical/hospital disinfectant
5. Self-deodorizing
6. New Fresh Light Mint Green Color

## UNCOATED



Stealth-Core: (un-coated open-cell polyurethane foam)

1. New Design: Have been designed to reshape the industry - literally! The unique angles are incorporated into every sponge
  - a. Radiolucent and Artifact-free —no lines or ghosting
  - b. Meets California 2015 Standards for flammability
  - c. Increased stability
2. New Fresh Light Mint Green Color
3. Non-Allergenic, Latex Free



Cat.No. YCAA @ \$74.40

**ADULT OBLIQUE FINGER  
BLOCK**  
10.5 X 6 X 3"



Cat.No. YFAA @ \$16.00



Cat.No. YCAB @ \$85.60

**ADULT OBLIQUE FINGER  
BLOCK**  
12.5 X 10.5 X 3"



Cat.No. YFAB @ \$51.20



Cat.No. YCAC @ \$75.20

**BILATERAL PEDIATRIC OBLIQUE  
FINGER BLOCK**  
7.75 X 7.5 X 2"



Cat.No. YFAC @ \$12.00



Cat.No. YCAD @ \$128.00

**ADULT LATERAL FINGER  
BLOCK**  
13 X 8 X 3"



Cat.No. YFAD @



Cat.No. YCAE @ \$87.20

**PEDIATRIC LATERAL FINGER  
BLOCK**  
7 X 4 X 1.75"



Cat.No. YFAE @ \$36.80



Cat.No. YCAK @ \$49.60

**CIRCULAR HEAD BLOCK**  
7 " TOP ~ 9" BASE



Cat.No. YFAK @ \$11.20

# SECTION 1

# POSITIONING SPONGES

ALL TYPES (COATED AND UNCOATED)

## COATED

## UNCOATED



Cat.No. YCBE @ \$123.20

**34° WEDGE SET (2)**  
**9.75 X 5.5 X 3"**



Cat.No. YFBE @ \$16.80



Cat.No. YCEA @ \$400.80

**45° SPINAL WEDGE  
SPONGE**  
**33 X 13.7 X 9.5"**  
Uncoated = 24x13.75x9.5"



Cat.No. YFEA @ \$57.60



Cat.No. YCAN @ \$146.40

**AP/PA CHILD HEAD  
HOLDER SPONGE**  
**11 X 9.75 X 5"**



Cat.No. YFAN @ \$73.60



Cat.No. YCAW @ \$569.60

**ADULT MYELOGRAM  
BLOCK SPONGE**  
**22 X 10 X 14"**



Cat.No. YFAW @ \$188.00

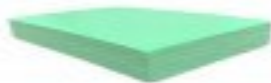


Cat.No. YCBI @ \$196.00

**15° WEDGE SPONGE  
SET (2)**  
**10 X 12.3 X 3"**

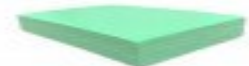


Cat.No. YFBI @ \$34.40



Cat.No. YCBR @ \$28.00

**RECTANGLE SPONGE**  
**6 X 4 X 1"**

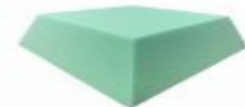


Cat.No. YFBR @ \$3.20



Cat.No. YCBO @ \$167.20

**SQUARE SPONGE**  
**13.5 X 13.5 X 4"**



Cat.No. YFBO @ \$39.20

# SECTION 1

## POSITIONING SPONGES

ALL TYPES (COATED & UNCOATED)

### COATED



Cat.No. YCAQ @ \$157.60

**CHILD HEAD IMMOBILIZER**  
11.5 X 6.75 X 5.25"

### UNCOATED



Cat.No. YFAQ @ \$46.40



Cat.No. YCAR @ \$168.00

**CERVICAL HEAD REST**  
16 X 7.5 x 4.5"



Cat.No. YFAR @ \$62.40



Cat.No. YCAX @ \$292.80

**CHILD MYELOGRAM BLOCK**  
14 X 8 X 10"



Cat.No. YFAX @ \$72.80



Cat.No. YCAY @ \$239.20

**SPECIALTY ANGULAR BOLSTER**  
22.5 X 14 X 7.25"



Cat.No. YFAY @



Cat.No. YCBB @ \$225.60

**45° SPINAL WEDGE**  
20.25 X 10 X 7"



Cat.No. YFBB @ \$55.20



Cat.No. YCBC @ \$120.80

**45° SPINAL WEDGE**  
13.5 X 10 X 7"



Cat.No. YFBC @ \$35.20



Cat.No. YCBD @ \$236.80

**45° SPINAL WEDGE**  
27.75 X 10 X 7"



Cat.No. YFBD @ \$104.00

# POSITIONING SPONGES

## ALL TYPES (COATED & UNCOATED)

### COATED



Cat.No. YCBF @ \$206.40

**27° WEDGE**  
**15.5 X 12.75 X 6"**

### UNCOATED



Cat.No. YFBF @ \$47.20



Cat.No. YCBG @ \$166.40

**21° WEDGE SPONGE**  
**14.25 X 12.25 X 4.5"**



Cat.No. YFBG @ \$48.00



Cat.No. YCBH @ \$255.20

**16° WEDGE SET (2)**  
**11 X 8.5 X 3.5"**



Cat.No. YFBH @ \$48.00



Cat.No. YCBJ @ \$150.40

**12° WEDGE SET (2)**  
**9.25 X 10.5 X 2.25"**



Cat.No. YFBJ @ \$24.00



Cat.No. YCBL @ \$140.80

**RECTANGLE SPONGE**  
**BOTTOM: 12.5 X 10.25 X 3"**  
**TOP: 7.5 X 10"**



Cat.No. YFBL @ \$17.60



Cat.No. YCBN @ \$248.80

**RECTANGLE SPONGE**  
**BOTTOM: 20.5 X 16.25 X 3"**  
**TOP: 14 X 18"**

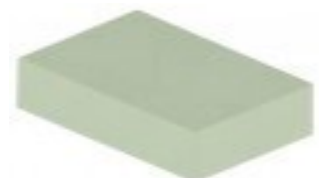


Cat.No. YFBN @ \$43.20



Cat.No. YCBT @ \$39.20

**RECTANGLE SPONGE**  
**6 X 4 X 2"**

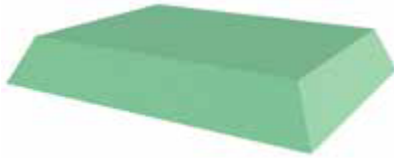


Cat.No. YFBT @ \$5.60

# POSITIONING SPONGES

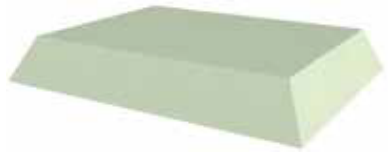
ALL TYPES (COATED, UNCOATED, VINYL COVERED, AND CLOSED CELL)

## COATED

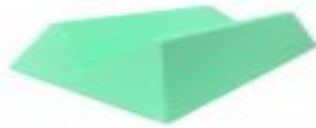


Cat.No. YCBY @ \$504.00

**RECTANGLE SPONGE**  
**BASE: 27.5 X 21.5 X 4"**  
**TOP: 24 X 18**



Cat.No. YFBY @ \$67.20



Cat.No. YCCB@ \$254.40

**MEDIUM EXTREMITY SPONGE**

**19.75 X 11.5 X 5"**



Cat.No. YFCB @ \$56.80



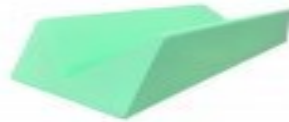
Cat.No. YCCA @ \$149.60

**SMALL EXTREMITY SPONGE**

**12.5 X 7 X 3"**



Cat.No. YFCA @ \$16.00

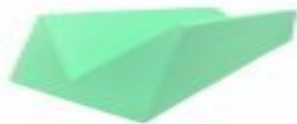


Cat.No. YCCC @ \$486.20

**LARGE EXTREMITY SPONGE**  
**30.5 X 11 X 7"**  
**UNCOATED = 24 X 11 X 7"**



Cat.No. YFCC @ \$156.00



Cat.No. YCCD @ \$745.60

**EXTRA LARGE EXTREMITY SPONGE**  
**44.5 X 14 X 9"**  
**UNCOATED = 36 X 14 X 9"**



Cat.No. YFCD @ \$189.60



Cat.No. YCEE @ \$356.00

**45° ECHOCARDIOLOGY WEDGE SPONGE**  
**38.25 X 13 X 9"**



Cat.No. YFEE @ \$201.60

# POSITIONING SPONGES

ALL TYPES (COATED & UNCOATED)

## COATED



Cat.No. YCBU @ \$304.00

30° - 60° - 90° MULTIANGLE  
WEDGE  
29.5 X 10 X 6"

## UNCOATED



Cat.No. YFBU @ \$86.40



Cat.No. YCEM@ \$297.60

RECTANGLE SPONGE  
24 X 15 X 2.5"



Cat.No. YFEM @ \$40.80



Cat.No. YCFD@ \$209.60

45° SPINAL BODY WEDGE  
21 X 7 X 7"



Cat.No. YFFD @ \$69.60



**COATED**  
BILATERAL LEG IMMOBILIZER  
21 X 20 X 6"

Cat.No. YCAG @ \$446.40

## COATED



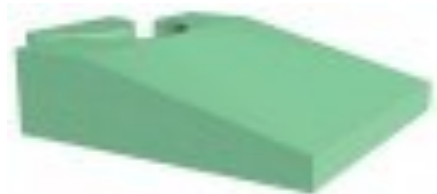
**COATED**  
KNEE ARTHOGRAM BLOCK  
SPONGE  
19 X 14.5 X 8"

Cat.No. YCAH@ \$248.00



**COATED**  
26° KNEE WEDGE SUPPORT  
21 X 19 X 8"

Cat.No. YCAJ @ \$457.60



**COATED**  
ENDO-ULTRASOUND WEDGE  
20 X 20 X 6"

Cat.No. YCUZ @ \$484.00





# COATED



Stealth-Cote: (coated open-cell polyurethane foam)

1. New Proprietary Mixed Coating, that when sprayed, creates a unique skin membrane resistant to various chemicals and bodily fluids. It adds cleanability and durability to every sponge. It is not your old synthetic rubber vinyl based coating.
  - a. Radiolucent and Artifact-free—no lines or ghosting
  - b. Meets California 2015 TB #117-2013 Standards for flammability
  - c. Increased stability
2. Anti-Microbial, which also means Antibacterial and Antifungal
3. Stain Resistant
4. Easy to clean with any medical/hospital disinfectant
5. Self-deodorizing
6. New Fresh Light Mint Green Color

## Stealth-Cote Sponges

### **CLEANING & CARE INSTRUCTIONS**

Thank you for choosing Imaging Services for your radiology accessory needs. To ensure the longevity of your new Stealth-Cote sponges, we recommend following these guidelines for cleaning and care.

#### **Cleaning & Care for Stealth Cote Sponges :**

We all know that in a medical environment, it is easy for surfaces to become dirty and soiled from blood, bodily fluids, betadine, barium, and other fluids.

#### **Do:**

- We recommend cleaning with cold water and a mild detergent immediately after contact with fluids. Household 409 Spray can be used to clean and remove dust and dirt from your coated sponge.
- To disinfect your sponges, Techno-Aide recommends the use of disinfectant wipes such as PDI Sani-Cloth AF3 Alcohol Free Germicidal Wipes Cat# GWP-WAF. Allow a drying time of at least 3 minutes.
- PDI Sani-Cloth Bleach wipes can be used as a disinfectant if you strictly follow the manufactures guidelines. Failure to comply with these guidelines will result in void of warranty.
- Store your sponges in a clean and dry area when not in use.

#### **Don't:**

- Do not autoclave or launder.
- Do not soak/submerge sponges in water.

#### **Cleaning & Care for Stealth Core Sponges :**

These sponges do not have a surface that is classified as “cleanable”. You can however spot clean the foam fairly well with Formula 409 Cleaner/disinfectant without affecting the foam in any negative ways.

Failure to adhere to the above recommendations will shorten the life of your sponges, promote discoloration of the surface, and will possibly void your warranty. The manufacturer provides a one year warranty on workmanship and materials.

**For more information, call  
IMAGING SERVICES AT  
1-866-227-9290**



# UNCOATED



Stealth-Core: (un-coated open-cell polyurethane foam)

1. New Design: Have been designed to reshape the industry - literally! The unique angles are incorporated into every sponge
  - a. Radiolucent and Artifact-free —no lines or ghosting
  - b. Meets California 2015 Standards for flammability
  - c. Increased stability
2. New Fresh Light Mint Green Color
3. Non-Allergenic, Latex Free

## Stealth-Cote Sponges

### RETURN POLICY

Thank you for choosing Imaging Services for your radiology accessory needs.

1. **Products cannot be returned to the manufacturer for credit or otherwise, unless accompanied by a Return Authorization Number issued by Customer service**
2. **All authorized returns are subject to a minimum 20% refurbishing and reconsignment fee.**
  - a. **Return: Artifact-** Image Required to document any possible artifact. If the artifact is a result of manufacturing, a replacement sponge will be provided at no charge.
    - a. **Return: Artifact**—Image Required to document and possible artifact. If the artifact is a result of manufacturing, a replacement sponge will be provided at No Charge to you.
    - a. **Return: Too Big** – Customer can return sponge (if not used) for a smaller sponge or non-stealth sponge at no additional cost. If customer chooses no replacement, a 20% restock fee applies.
    - b. **Return: Not like the sponge I have now.** Customer can return sponge (if not used) for a smaller sponge at no additional cost. If customer chooses no replacement, a 20% restock fee applies.
    - c. **Return: Sponge has blow-holes.** Image of the sponge is Required to document any blow-hole artifact. If the artifact is a result of manufacturing a replacement sponge will be provided.
    - d. **Return: Wanted coated or uncoated instead:** If the sponge is not used, Techno-Aide will replace with a new one with no restocking fees. If customer chooses no replacement, a 20% restock fee applies.
3. **No returns for “used” sponges.**
4. **No returns 45 days past the invoice date will be allowed.**
5. **A credit memo will be issued only after the returned merchandise has been received and inspected by the manufacturer.**
6. **No returns for custom sponges.**
7. **Damages on returned items are the responsibility of the shipper. For proper credit to be considered, every effort should be made to assure a damage-free return.**

**For more information, call  
IMAGING SERVICES AT  
1-866-227-9290**

# SECTION 2 VINYL COVERED SPONGES



**VINYL COVERED MV-TROUGH  
AP & PA HEAD HOLDER SPONGE  
15 X 14 X 6.7"**

Cat.No. YVAM @ \$309.60

---



**VINYL COVERED 45°  
SPINAL NWEDGE BOLSTER SPONGE  
21 X 7 X 7"**

Cat.No. YVFO @ \$321.60

---



**VINYL COVERED 45°  
CARDIAC WEDGE SPONGE  
28 X 14 X 14"**

Cat.No. YVDA @ \$893.60

---



**VINYL COVERED 45°  
WEDGE BOLSTER SPONGE  
16 X 8 X 8"**

Cat.No. YVFD @ \$340.00

---



**VINYL COVERED 30°-60°-90°  
WEDGE SPONGE  
24 X 10 X 6"**

Cat.No. YVFU @ \$336.80

---



**VINYL COVERED KNEE  
BOLSTER SPONGE  
17 X 13 X 6"**

Cat.No. YVF40 @ \$440.80

---



**VINYL COVERED KNEE  
WEDGE BOLSTER SPONGE  
25 X 16 X 8.25"**

Cat.No. YVFM @ \$624.00

---



**VINYL COVERED CYLINDER  
BOLSTER SPONGE  
24 X 8 X 8"**

Cat.No. YVFA @ \$250.40

---



**VINYL COVERED SEMI-  
CYLINDER  
BOLSTER SPONGE  
18 X 8 X 6"**

Cat.No. YVF B @ \$193.60

## SECTION 2

# VINYL COVERED SPONGES



**VINYL COVERED  
RECTANGLE SPONGE  
6 X 4 X 2"**

Cat.No. YVBT @ \$152.00

---



**VINYL COVERED DEXA  
LEG BOLSTER SPONGE  
20 X 20 X 12"**

Cat.No. YVFQ @ \$595.20

---



**VINYL COVERED  
RECTANGLE SPONGE  
6 X 4 X 1"**

Cat.No. YVBR @ \$151.20

---



**VINYL COVERED  
RECTANGLE BOLSTER SPONGE  
24 X 18 X 4"**

Cat.No. YVFP @ \$265.60

---



**VINYL COVERED  
RECTANGLE BOLSTER SPONGE  
12 X 8 X 6"**

Cat.No. YVFG @ \$158.40

---



**VINYL COVERED  
RECTANGLE BOLSTER SPONGE  
14 X 12 X 3"**

Cat.No. YVFH @ \$105.60

---



**VINYL COVERED  
RECTANGLE BOLSTER SPONGE  
20 X 13 X 3"**

Cat.No. YVFK @ \$140.80

---



**VINYL COVERED 20° INCLINE  
WEDGE BOLSTER SPONGE  
32 X 20 X 12"**

Cat.No. YVFE @ \$438.60

---



**VINYL COVERED COMFORT  
PILLOW BODY WEDGE  
25 X 16 X 8.25"**

Cat.No. YFV @ \$468.00

## SECTION 3

# CLOSED CELL SPONGES

*Closed Cell Sponges* are made from a lightweight, radiolucent, non-porous foam. The perfect solution for any positioning need! These positioning sponges are entirely fluid resistant, easy to clean and extremely durable! Featured in a non-coated, premium charcoal grey color.

- 100% Radiolucent
- Artifact free imaging
- Cleanable, fluid resistant surface
- Lightweight and comfortable
- The number one option in positioning sponges!



**CLOSED CELL FINGER BLOCK  
5 X 5 X 3"**

Cat.No. YXAA @ \$28.00

---



**CLOSED CELL ADULT BI-LATERAL  
FINGER BLOCK SET (L & R)**

Cat.No. YXAD @ \$136.00

---



**CLOSED CELL KNEE WEDGE  
SPONGE  
22 X 13.5 X 7"**

Cat.No. YXAJ @ \$270.40

---



**CLOSED CELL  
CIRCULAR HEAD SPONGE  
7 X 1.5"**

Cat.No. YXAK @ \$19.20

---



**CLOSED CELL SPECIALTY  
SPECIALTY ANGULAR  
BOLSTER SPONGE  
14 X 22.5 X 8"**

Cat.No. YXAY @ \$205.60

---



**CLOSED CELL LARGE  
45° SPINAL BODY WEDGE  
SPONGE  
21 X 7 X 7"**

Cat.No. YXBD @ \$116.80

# SECTION 3

# CLOSED CELL SPONGES



**CLOSED CELL 45° WEDGE SPONGE**  
**7 X 7 X 7"**

Cat.No. YXBC @ \$84.00

---



**CLOSED CELL 34° WEDGE SPONGE**  
**SET )(2)**  
**7 X 4 X 3"**

Cat.No. YXBE @ \$87.20

---



**CLOSED CELL 27° WEDGE SPONGE**  
**10 X 10 X 6"**

Cat.No. YXBF @ \$146.40

---



**CLOSED CELL 15° WEDGE SPONGE**  
**SET (2)**  
**10 X 7 X 2"**

Cat.No. YXBI @ \$68.80

---



**CLOSED CELL 12° WEDGE SPONGE**  
**SET (2)**  
**9.5 X 7.25 X 2.25"**

Cat.No. YXBJ @ \$136.00

---



**CLOSED CELL RECTANGLE SPONGE**  
**10 X 7.5 X 3"**

Cat.No. YXBL @ \$24.00

---



**CLOSED CELL RECTANGLE SPONGE**  
**18 X 14 X 3"**

Cat.No. YXBN @ \$52.00

---



**CLOSED CELL 12° WEDGE SPONGE**  
**SET (2)**  
**29.5 X 7.25 X 2.25"**

Cat.No. YXBU @ \$187.20

---



**CLOSED CELL ULTRASOUND**  
**WEDGE SPONGE**  
**20 X 20 X 6"**

Cat.No. YXUZ @ \$248.00

---

IF YOU DO NOT SEE A CLOSED CELL SPONGE IN THIS SECTION, PLEASE CONTACT US. WE ALSO HAVE "BUNDLES" WHICH CONSISTS OF ANYWHERE FROM 4 TO 8 DIFFERENT SPONGES.

# SECTION 4

# NYLON COVERED FOR MRI



**NYLON COVERED MRI  
SEMI-ROUND NECK ROLL  
POSITIONER  
7 X 3 X 2.3"**

Cat.No. GP0202 @ \$472.00

---



**NYLON COVERED MRI  
KNEE WEDGE POSITIONER  
28.2 X 16 X 8"**

Cat.No. GE1211 @ \$816.00

---



**NYLON COVERED MRI  
CURVED WEDGE POSITIONER SET  
14 X 4 X 1.5"**

Cat.No. GP0192 @ \$420.00

---



**NYLON COVERED MRI  
RECTANGLE POSITIONER SET (2)  
14 X 3 X 1"**

Cat.No. GP0132 @ \$352.00

---



**NYLON COVERED MRI  
RECTANGLE POSITIONER SET (2)  
5 X 3 X 1"**

Cat.No. GP0152 @ \$352.00

---



**NYLON COVERED MRI  
WEDGE POSITIONER SET (2)  
10 X 10 X 3"**

Cat.No. GP0162 @ \$400.00

---



**NYLON COVERED MRI  
WEDGE POSITIONER SET (2)  
14 X 4 X 1.5"**

Cat.No. GP0172 @ \$400.00

---



**NYLON COVERED MRI  
RECTANGLE POSITIONER SET (2)  
4 X 3 X 2"**

Cat.No. GP0182 @ \$388.00

## SECTION 5

# ARTIFACT-FREE COATED SPONGES

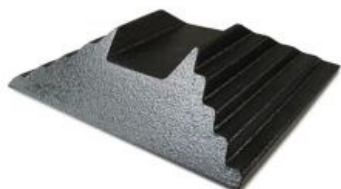
- These sponges have a Patent ( not patent-pending)
- Are manufactured in the USA
- Have the Unique Flared Edge Design to eliminate line artifacts
- Have a durable black coating that does not easily peel off or tear
- Radiolucent with minimal shadowing
- And are Available individually or in kits



**COATED N-VISION BLACK FOAM  
ADULT OBLIQUE FINGER BLOCK  
10.5 X 6 X 3"**

Cat.No. NCAA @ \$47.60

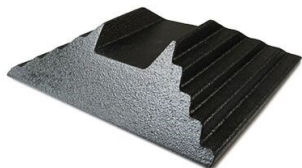
---



**COATED N-VISION BLACK FOAM  
BILATERAL ADULT OBLIQUE  
FINGER BLOCK  
12 X 10 X 3"**

Cat.No. NCAB @ \$57.95

---



**COATED N-VISION BLACK FOAM  
BILATERAL PEDIATRIC CHILD  
OBLIQUE FINGER BLOCK  
7.5 X 7.5 X 2"**

Cat.No. NCAC @ \$44.85

---



**COATED N-VISION BLACK FOAM  
ADULT LATERAL FINGER BLOCK  
13 X 8 X 3"**

Cat.No. NCAD @ \$89.70

---



**COATED N-VISION BLACK FOAM  
PEDIATRIC CHILD LATERAL  
FINGER BLOCK  
7 X 4 X 1.75"**

Cat.No. NCAE @ \$60.05

---



**COATED N-VISION BLACK FOAM  
KNEE ARTHOGRAM BLOCK  
BOLSTER  
14.5 X 19 X 8"**

Cat.No. NCAH @ \$184.90

---



**COATED N-VISION BLACK FOAM  
CT WEDGE SUPPORT  
21 X 19 X 8"**

Cat.No. NCAJ @ \$280.15



# SECTION 5

# ARTIFACT-FREE COATED SPONGES



**COATED N-VISION BLACK FOAM  
7" CIRCULAR HEAD BLOCK  
WITH 9" BASE**

Cat.No. NCAK @ \$33.80

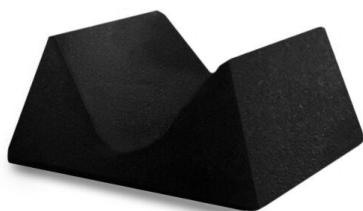
---



**COATED N-VISION BLACK FOAM  
HEAD & NECK SUPPORT  
16 X 14.5 X 6.5"**

Cat.No. NCAL @ \$166.30

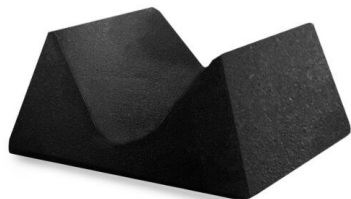
---



**COATED N-VISION BLACK FOAM  
AP/PA ADULT HEAD HOLDER  
15 X 14 X 6.75"**

Cat.No. NCAM @ \$191.15

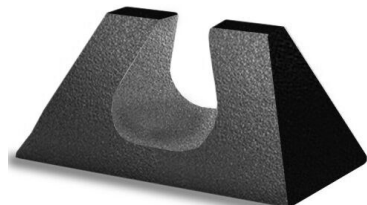
---



**COATED N-VISION BLACK FOAM  
AP/PA PEDIATRAC HEAD HOLDER  
11 X 9.75 X 5"**

Cat.No. NCAN @ \$95.90

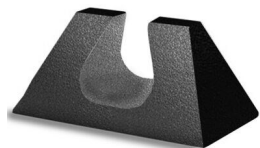
---



**COATED N-VISION BLACK FOAM  
ADULT HEAD IMMOBILIZER  
15.25 X 9 X 7"**

Cat.No. NCAP @ \$218.05

---



**COATED N-VISION BLACK FOAM  
PEDIATRIC CHILD HEAD IMMOBILIZER  
11.5 X 6.75 X 5.25"**

Cat.No. NCAQ @ \$116.60

---



**COATED N-VISION BLACK FOAM  
CERVICAL HEAD REST SPONGE  
16 X 7.5 X 4.5"**

Cat.No. NCAR @ \$104.20

---

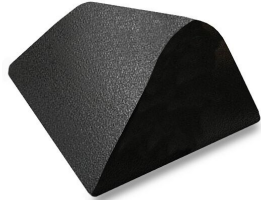


**COATED N-VISION BLACK FOAM  
BARIATRIC TORSO BOLSTER  
16.5 X 18.5 X 7"**

Cat.No. NCAT @ \$231.15

# SECTION 5

# ARTIFACT-FREE COATED SPONGES



**COATED N-VISION BLACK FOAM  
ANGULAR BOLSTER  
22.5 X 14 X 7.25"**

Cat.No. NCAY @ \$158.70

---



**COATED N-VISION BLACK FOAM  
45° SPINAL WEDGE  
27.75 X 10 X 7"**

Cat.No. NCBA @ \$262.90

---



**COATED N-VISION BLACK FOAM  
45° WEDGE  
20.25 X 10 X 7"**

Cat.No. NCBB @ \$148.35

---



**COATED N-VISION BLACK FOAM  
45° WEDGE  
13.5 X 10 X 7"**

Cat.No. NCBC @ \$86.65

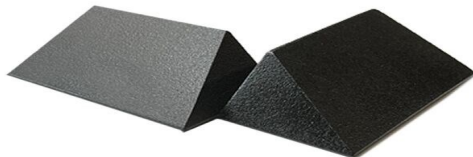
---



**COATED N-VISION BLACK FOAM  
45° WEDGE  
27.75 X 10 X 7"**

Cat.No. NCBD @ \$157.70

---



**COATED N-VISION BLACK FOAM  
34° WEDGE (SET OF 2)  
9.75 X 5.5 X 3"**

Cat.No. NCBE @ \$84.20

---



**COATED N-VISION BLACK FOAM  
27° WEDGE  
15.5 X 12.75 X 6"**

Cat.No. NCBF @ \$138.70

---

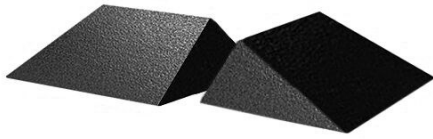


**COATED N-VISION BLACK FOAM  
21° WEDGE  
14.25 X 12.25 X 4.5"**

Cat.No. NCBG @ \$108.35

# SECTION 5

# ARTIFACT-FREE COATED SPONGES



**COATED N-VISION BLACK FOAM**  
**16° WEDGE (SET OF 2)**  
**11 X 8.5 X 3.5"**

Cat.No. NCBH @ \$164.90

---



**COATED N-VISION BLACK FOAM**  
**15° WEDGE (SET OF 2)**  
**10 X 12.5 X 3"**

Cat.No. NCBI @ \$124.20

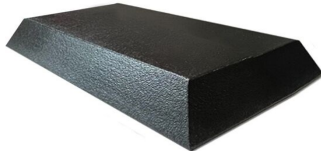
---



**COATED N-VISION BLACK FOAM**  
**12° WEDGE (SET OF 2)**  
**9.25 X 10.5 X 2.25"**

Cat.No. NCBJ @ \$99.35

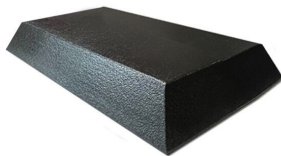
---



**COATED N-VISION BLACK FOAM**  
**3" RECTANGLE**  
**7.5 X 10" TOP—12.5 X 10.25" BOTTOM**

Cat.No. NCBL @ \$92.45

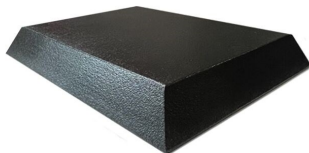
---



**COATED N-VISION BLACK FOAM**  
**3" RECTANGLE**  
**8 X 12" TOP—14.5 X 10.5" BOTTOM**

Cat.No. NCBM @ \$117.30

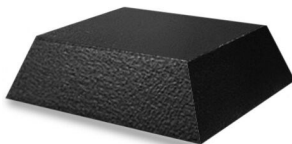
---



**COATED N-VISION BLACK FOAM**  
**3" RECTANGLE**  
**14 X 18" TOP—20.5 X 15.25" BOTTOM**

Cat.No. NCBN @ \$142.15

---



**COATED N-VISION BLACK FOAM**  
**4" SQUARE TOP**  
**10 X 10" TOP—13.5 X 13.5" BOTTOM**

Cat.No. NCBO @ \$117.30

---



**COATED N-VISION BLACK FOAM**  
**4" RECTANGLE TOP**  
**24 X 18" TOP—27.5 X 21.5" BOTTOM**

Cat.No. NCBP @ \$423.65

---



**COATED N-VISION BLACK FOAM**  
**1" RECTANGLE**  
**4 X 6" (NON-FLARED)**

Cat.No. NCBR @ \$24.85

---



**COATED N-VISION BLACK FOAM**  
**1.5" RECTANGLE**  
**4 X 6" (NON-FLARED)**

Cat.No. NCBS @ \$31.75

# SECTION 5

# ARTIFACT-FREE COATED SPONGES



COATED N-VISION BLACK FOAM  
2" RECTANGLE  
4 X 6" (NON-FLARED)

Cat.No. NCBT @ \$24.85

---



COATED N-VISION BLACK FOAM  
30°-60°90° MULTI ANGLE BODY WEDGE  
29.5 X 10 X 6"

Cat.No. NCBU @ \$197.35

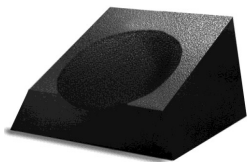
---



COATED N-VISION BLACK FOAM  
2" RECTANGLE  
6 X 6" (NON-FLARED)

Cat.No. NCBV @ \$45.55

---



COATED N-VISION BLACK FOAM  
CT HEADREST  
12.5 X 11 X 10"

Cat.No. NCBW @ \$338.80

---



COATED N-VISION BLACK FOAM  
4" RECTANGLE  
24 X 18" TOP—27.5 X 21.5" BOTTOM

Cat.No. NCBY @ \$391.90

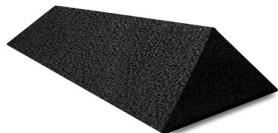
---



COATED N-VISION BLACK FOAM  
45° WEDGE  
33 X 13.75 X 9.5"

Cat.No. NCEA @ \$320.85

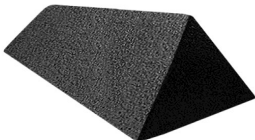
---



COATED N-VISION BLACK FOAM  
45° WEDGE  
30 X 10 X 7.5"

Cat.No. NCEB @ \$236.65

---



COATED N-VISION BLACK FOAM  
45° ECHOCARDIOLOGY WEDGE  
38.25 X 13 X 9.5"

Cat.No. NCEE @ \$271.15

---



COATED N-VISION BLACK FOAM  
65° WEDGE  
25 X 16 X 8.5"

Cat.No. NCEG @ \$218.05

# SECTION 5

# ARTIFACT-FREE COATED SPONGES



**COATED N-VISION BLACK FOAM**  
**2.5" RECTANGLE –NON FLARED**  
**24 X 15"**

Cat.No. NCEM @ \$166.30



**COATED N-VISION BLACK FOAM**  
**3" PERINEAL ENDOVAGINAL ULTRA-**  
**SOUND WEDGE**

Cat.No. NCEQ @ \$245.65



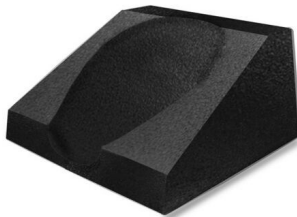
**COATED N-VISION BLACK FOAM**  
**30°-60°90° MULTI ANGLE BODY WEDGE**  
**29.5 X 10 X 6"**

Cat.No. NCEU @ \$202.85



**COATED N-VISION BLACK FOAM**  
**CT/PET HEAD HOLDER**  
**13.5 X 14 X 6.75"**

Cat.No. NCEV @ \$322.95



**COATED N-VISION BLACK FOAM**  
**CT HEADREST FOR PHILIPS & GE**  
**12 X 12.5 X 6.5"**

Cat.No. NCEW @ \$306.35



**COATED N-VISION BLACK FOAM**  
**45° SPINAL WEDGE, NON-FLARED**  
**21 X 7 X 7"**

Cat.No. NCFD @ \$129.75



**COATED N-VISION BLACK FOAM**  
**DECUBITUS BLOCK W/IMAGE**  
**RECPETOR HOLDER**  
**36 X 16 X 11"**

Cat.No. NCFQ @ \$683.10



**COATED N-VISION BLACK FOAM**  
**4' ENDOVAGINAL US WEDGE**  
**20 X 20 X 6"**

Cat.No. NCUZ @ \$331.90

# SECTION 5

# ARTIFACT-FREE COATED SPONGES

---



**COATED N-VISION BLACK FOAM  
CLINICAL SPONGE KIT "A"  
5 ASSORTED PIECES SHOWN**

**Cat.No. NSCA @ \$474.00**

---



**COATED N-VISION BLACK FOAM  
CLINICAL SPONGE KIT "B"  
11 ASSORTED PIECES SHOWN**

**Cat.No. NSCB @ \$691.40**

---



**COATED N-VISION BLACK FOAM  
GENERAL SPONGE KIT "A"  
7 ASSORTED PIECES SHOWN**

**Cat.No. NSGA @ \$400.90**

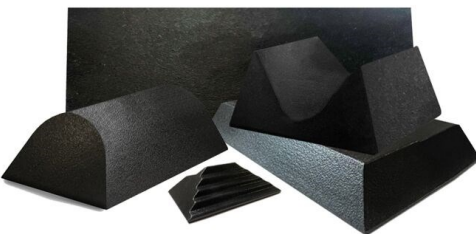
---



**COATED N-VISION BLACK FOAM  
GENERAL SPONGE KIT "A"  
10 ASSORTED PIECES SHOWN**

**Cat.No. NSGB @ \$540.95**

---



**COATED N-VISION BLACK FOAM  
ORTHOPEDIC SPONGE KIT "A"  
6 ASSORTED PIECES SHOWN**

**Cat.No. NSOA @ \$564.40**

---

***IN ADDITION TO THE FIVE (5) KITS SHOWN HERE ON PAGE 22, WE HAVE AN  
ADDITIONAL SEVENTEEN (17) KITS AVAILABLE TO FIT EVERYONE'S NEEDS.  
JUST INQUIRE AND TELL US WHAT TYPE OF KIT YOU NEED...***



# Imaging Services

## Our prices are the lowest on the internet.

IF YOU CANNOT FIND THE POSITIONING BLOCK YOU ARE LOOKING FOR, CONTACT US AND WE WILL GIVE YOU A QUOTE ON THE BEST POSSIBLE PRICE—GUARANTEED!

Phone: 866.227.9290

FAX: 610.543.2336

Email: [mtokash@imaging-services.net](mailto:mtokash@imaging-services.net)

**\*\* YOU MUST MENTION  
CODE POS3 ON  
THE ORDER SHEET TO RECEIVE  
THESE PRICES**

**TO PLACE AN ORDER, JUST COMPLETE THE BELOW AND  
FAX IT TO US -**

QTY	CAT. NO.	DESCRIPTION	PRICE

**\*\* CODE POS3**

NAME: \_\_\_\_\_

FACILITY NAME: \_\_\_\_\_

ADDRESS: \_\_\_\_\_

CITY, STATE: \_\_\_\_\_

ZIP CODE: \_\_\_\_\_

PHONE NO.: \_\_\_\_\_

CREDIT CARD NO.: \_\_\_\_\_

EXP. DATE: \_\_\_\_\_

CODE: \_\_\_\_\_

SIGNATURE: \_\_\_\_\_

SHIPPING CHARGES ARE EXTRA.